

Claude Monet

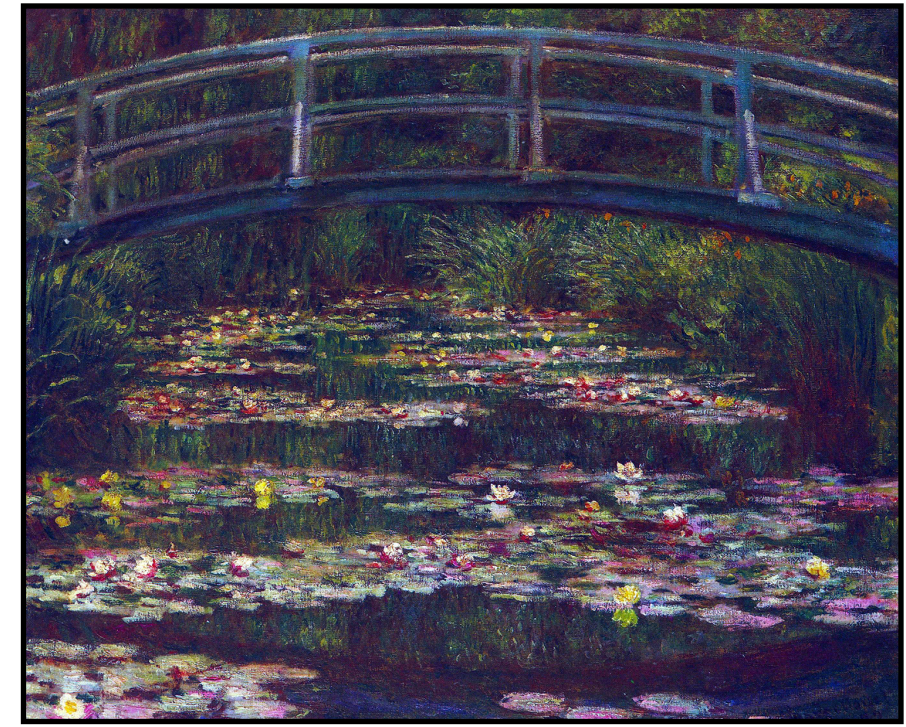


Visual Arts Response Activity

Japanese Bridge



Studyladder



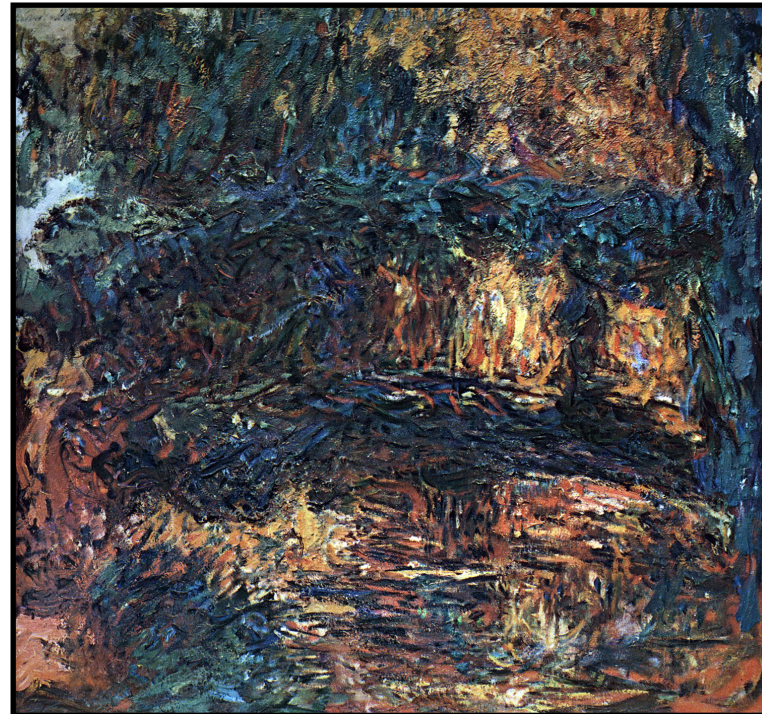
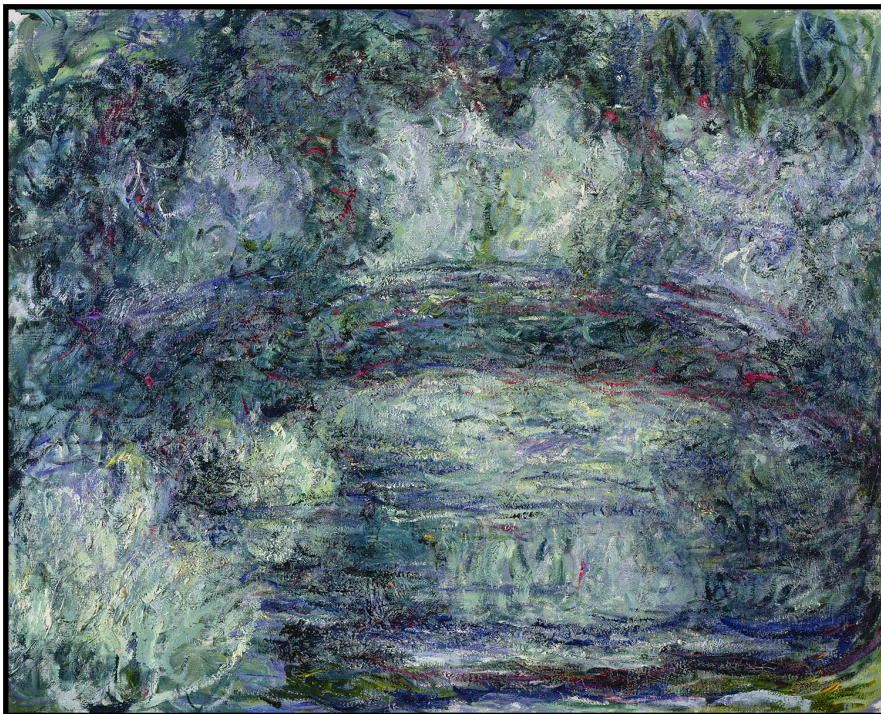
Claude Monet

The Japanese Bridge

Studyladder

Monet painted many different versions of the Japanese bridge over the lily pond in his garden. He enjoyed capturing the way light change the scenery.

In his old age he developed cataracts on his eyes which blurred his vision. This changed his perception of colour and he painted the scenery with more red and brown tones.





Painting Water Lilies, Japanese Bridge

- *Print a copy of 'Painting Water Lilies, Japanese Bridge' activity sheet.*

This is a photograph of the Japanese bridge in Monet's garden in Giverny, France.

Can you see the reflections of the bridge and some of the plants in the pond?

Tips:

- *Examine some of Monet's 'Water Lilies' paintings. Look at the brush strokes he used to create an impression of this peaceful place.*
- *Use colourful brush strokes to create your own painting.*

Use the page that has been started for you, if you like, or draw your own composition.



'Monet In His Studio Boat' painted by Edouard Manet in 1874

