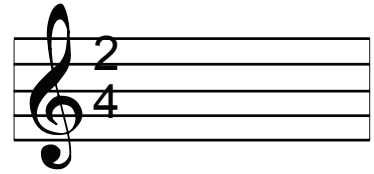
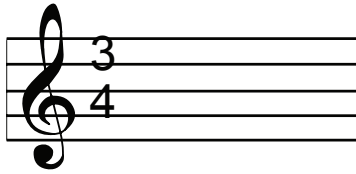
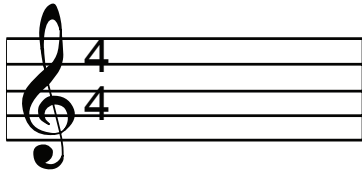


Name: \_\_\_\_\_ Date: \_\_\_\_\_

## Time Signatures

Time signatures are written on the staff after the clef.



## Common Time

**C** or  $\frac{4}{4}$

↗ The top number tells us the number of beats in a measure.

↘ The bottom number tells us the type of note...  
4 is 1/4 (quarter note)

○ = 4 counts    ♩ = 1 count  
♩ = 2 counts    ♪ = 1/2 count

The value of the notes in each bar add up to 4 beats.

Beat	×	×	×	×	×	×	×	×	×	×	×	×	×
	$\frac{4}{4}$	♩	♩	♩	♩	♩	♩	♩	♩	♩	♩	♩	♩
		2+	1+1	4		1+1+1+1	1+1+2						

(1/2+1/2)

Draw notes to make each measure add up to 4 beats.

Draw in bar lines to make each measure equal 4 beats for common time.

Draw in bar lines to make each measure equal 4 beats for common time.