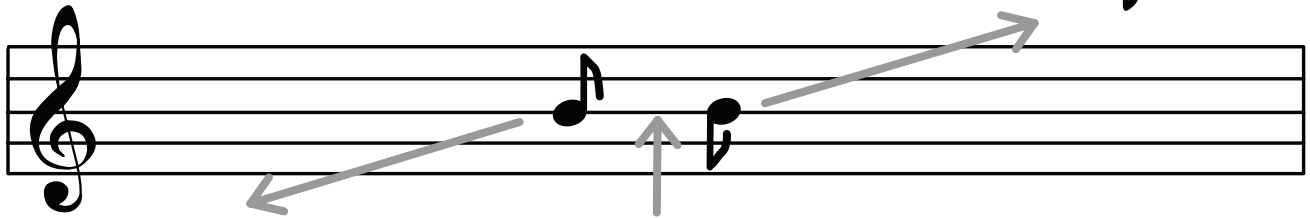



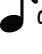

Name: _____ Date: _____


Eighth Notes

Single eighth notes can be drawn with tails up  and tails down. 



Below middle line:
Use up stems 

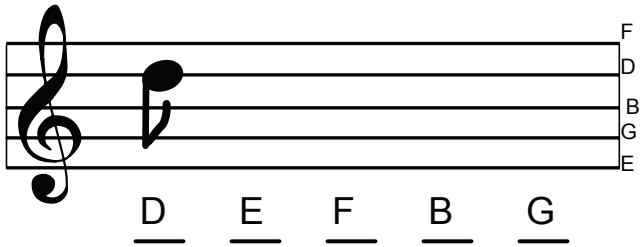
On middle line:
Use either  or 

Above middle line:
Use down stems 

Draw 10 single eighth notes with tails up _____

Draw 10 single eighth notes with tails down _____

Draw single eighth notes on the correct parts of the treble staff. (Be careful with the tails)



Eighth notes can be grouped and joined together with a straight line.

  Each group has _____ eighth notes.

Draw 5 pairs of eighth notes with tails up _____

Draw 5 pairs of eighth notes with tails down _____

Draw pairs of eighth notes on the correct parts of the treble staff.

