

# Metaphors

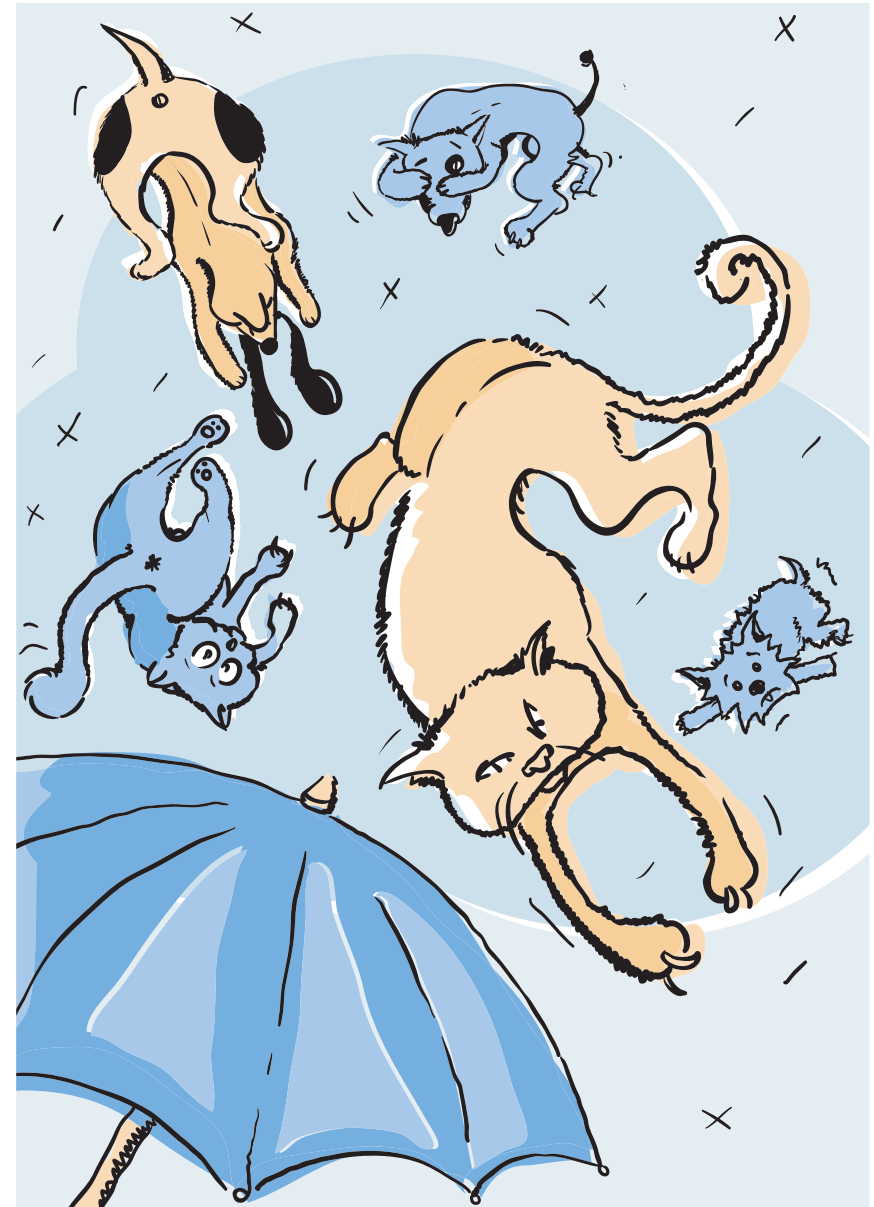
A metaphor is a figure of speech. It is the comparison of two things to suggest a likeness or similarity.

A metaphor implies that two things are the same in some way.

Take your umbrella because it's *raining cats and dogs*.

This means that the rain is very heavy.

Note that the word "like" is not used. If two things are compared using the word "like", it is a simile not a metaphor.



# Metaphors

a broken heart (hurt and sad)

feeling blue (sad or upset)

a blanket of snow (a layer of snow)

a night owl (likes to stay up until late at night)



Research: Can you find other metaphors?

# Metaphors

a couch potato

bubbly personality

his legs were rubber

seeds of wisdom

sparkling diamonds

fishing for a compliment



What do these metaphors mean?