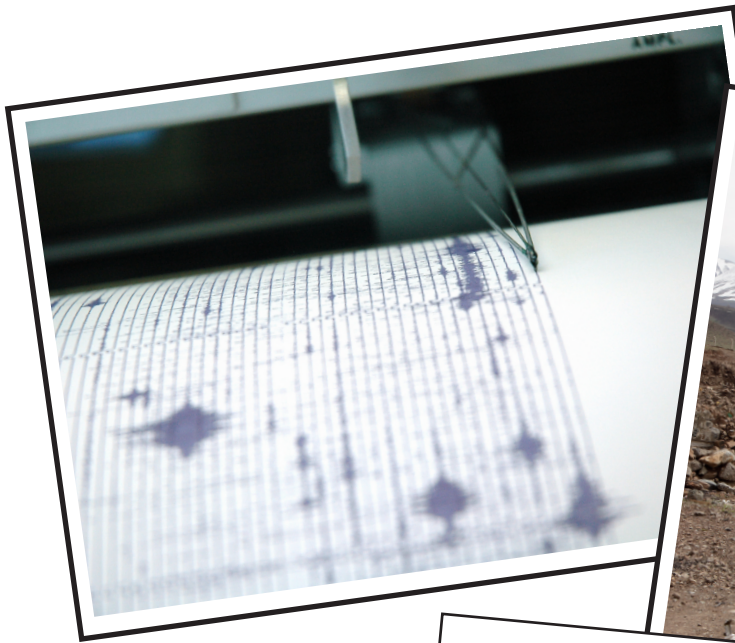


A photograph showing the aftermath of a disaster, likely an earthquake. The foreground is filled with a large pile of rubble, including broken concrete blocks, twisted metal rebar, and debris. In the background, several multi-story buildings are visible, many of which appear severely damaged or partially collapsed. The overall scene is one of significant destruction and devastation.

Earthquakes and Humans

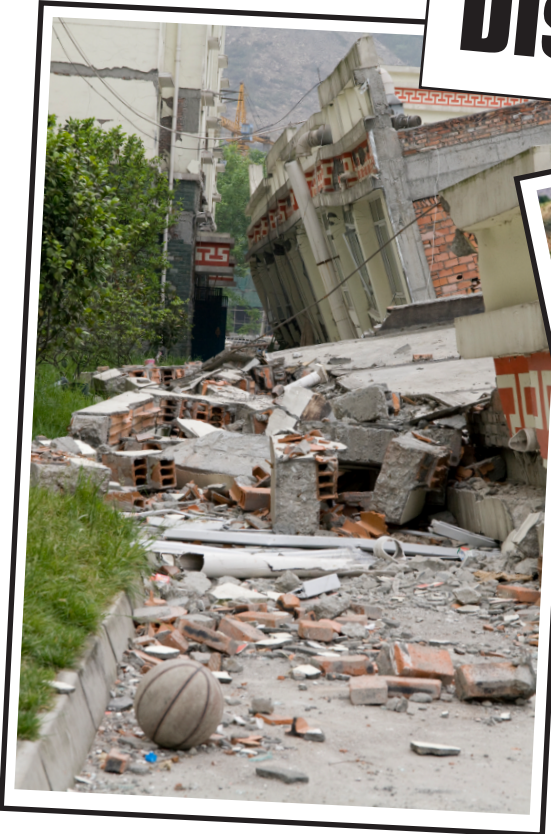
Discussion Points:

- 1) What effect have earthquakes had on society?
- 2) What are some historical examples of devastating earthquakes?
- 3) How do people recover from these devastating events?



Disaster

Quake Toll Rises



8.5 magnitude





Roman Forum, Rome, ITALY



The Acropolis, Athens, GREECE



Ancient City of Troy, Çanakkale Province, TURKEY



Knossos, Crete, GREECE

11 March 2011

North Pacific Coast, Japan

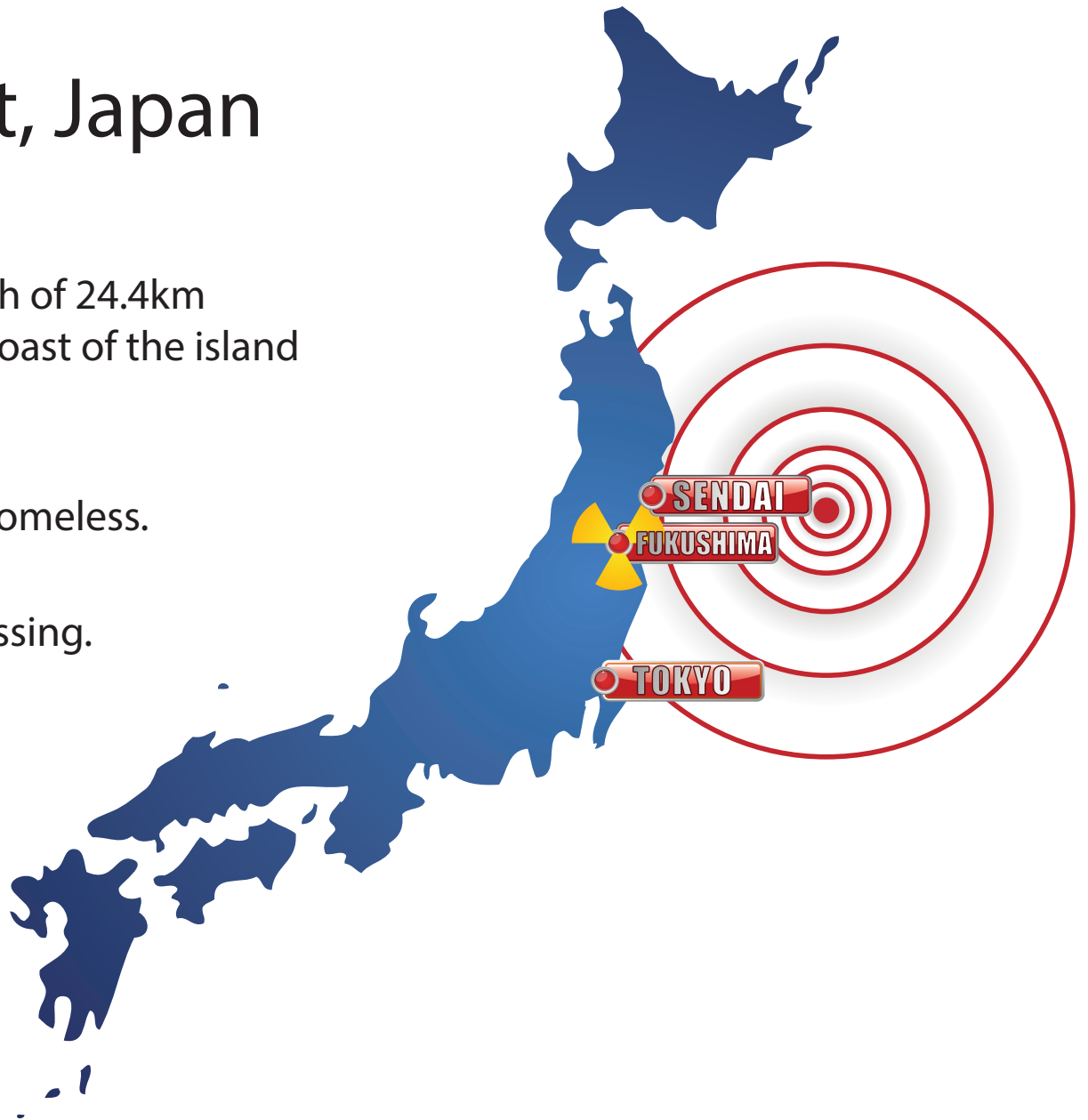
A 9.0 magnitude earthquake at depth of 24.4km triggered a tsunami on the eastern coast of the island Honshu, Japan.

Almost half a million people made homeless.

Estimated 25,000 people dead or missing.

Estimated total cost of the damage:
25 trillion yen (US\$309 billion).

Damage to Fukushima Daiichi
Nuclear Plant resulted in radiation
leaking into the air and ocean.



How do people recover after an earthquake event?

