




# At The Zoo

Study*ladder*

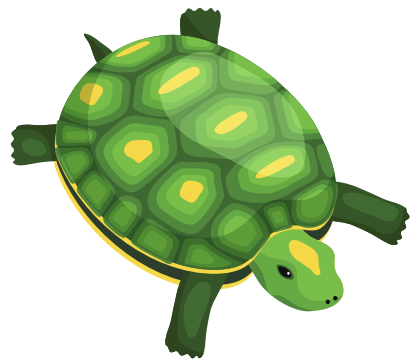
# At The Zoo

What animals live in the zoo?





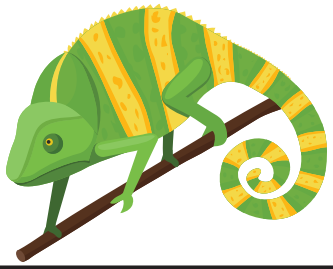
**Zoos are big places. A map can help you find your way around the zoo.**



# At The Zoo



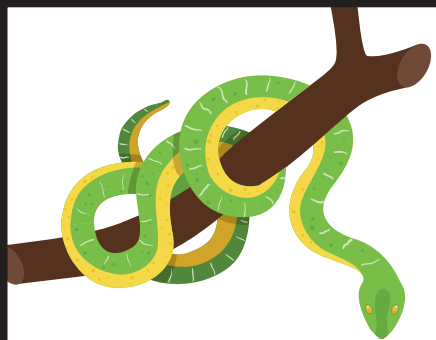
**At some zoos, you are allowed to feed some of the animals.**



# At The Zoo



**At some zoos, you can view the animals from behind fences or through glass windows to keep everyone safe.**



# Zoo Animals Wordbank

**lion**

**kangaroo**

**tiger**

**camel**

**elephant**

**zebra**

**rhinoceros**

**crocodile**

**giraffe**

**chimpanzee**

**gorilla**

**koala**

**panda**

Name: \_\_\_\_\_

# Our Trip to the Zoo


zoo	lions	seal	lunch	animals	enjoyed
-----	-------	------	-------	---------	---------

 Fill in the missing words.

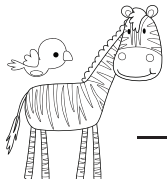

Yesterday, my family went to the \_\_\_\_\_.

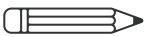
First, we went to see the  \_\_\_\_\_.

Next, we went to a  \_\_\_\_\_ show

and then we had lunch. After  \_\_\_\_\_,

we walked around the zoo to see the other

 \_\_\_\_\_ I really  \_\_\_\_\_ my

day at the zoo.  Draw a picture that matches the text.