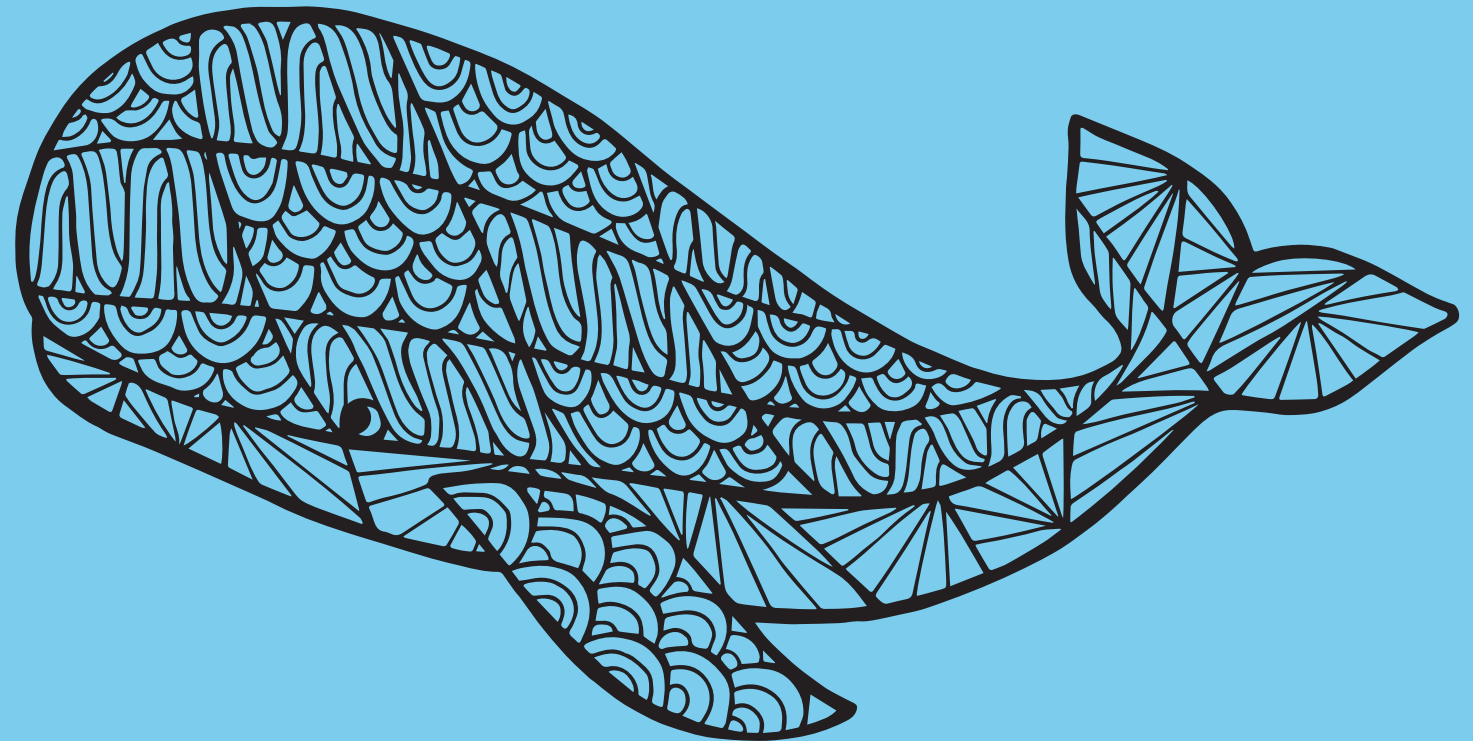


Research Activity:



Environmental Issues Affecting Whale Population Recovery



Environmental Issues Affecting Whale Population Recovery

- Work on your own or in a team.
- Select one environmental factor of interest.
- Conduct research using internet resources. (See next slide for a list of some organisations to get you started.)
- Print a Studyladder worksheet to record your findings.
- Present your findings to your peers in an interesting way. (For example, you could create a video, a computer slideshow, a pamphlet or an advertisement or perform a play.)

Whale Protection Name: _____ Date: _____

 **Climate Change** 



Research key issues that are important for whale protection:
Write a brief description of how the issue affects the whale population:

What are the facts?

What changes do you think need to be made to help improve the situation?

COPYRIGHT STUDYLADDER

Whale Protection Name: _____ Date: _____

 **Ship Strikes** 



Research key issues that are important for whale protection:
Write a brief description of the issue:

What are the facts?

What changes do you think need to be made to help improve the situation?

COPYRIGHT STUDYLADDER

Whale Protection Name: _____ Date: _____

 **Marine Debris** 


Research key issues that are important for whale protection:
Write a brief description of the issue:

What are the facts?

What changes do you think need to be made to help improve the situation?

COPYRIGHT STUDYLADDER

Whale Protection Name: _____ Date: _____

 **Noise Pollution**


Research key issues that are important for whale protection:
Write a brief description of the issue:

What are the facts?

What changes do you think need to be made to help improve the situation?

COPYRIGHT STUDYLADDER

Whale Protection Name: _____ Date: _____

Entanglements 

Research key issues that are important for whale protection:
Write a brief description of the issue:

What are the facts?

What changes do you think need to be made to help improve the situation?

COPYRIGHT STUDYLADDER

Organisations for Whale Conservation

- ***International Whaling Commission (IWC)***

<https://iwc.int/home>

- ***World Wildlife Fund (WWF)***

<http://www.wwf.org.au/>

- ***The IUCN Red List of Threatened Species*** (International Union for Conservation of Nature)

<http://www.iucnredlist.org/>

- ***Ocean Research and Conservation Association (ORCA)***

<http://www.teamorca.org/>

- ***Greenpeace International***

<http://www.greenpeace.org/international/en/>

- ***Sea Shepherd Conservation Society***

<http://www.seashepherd.org/>

