

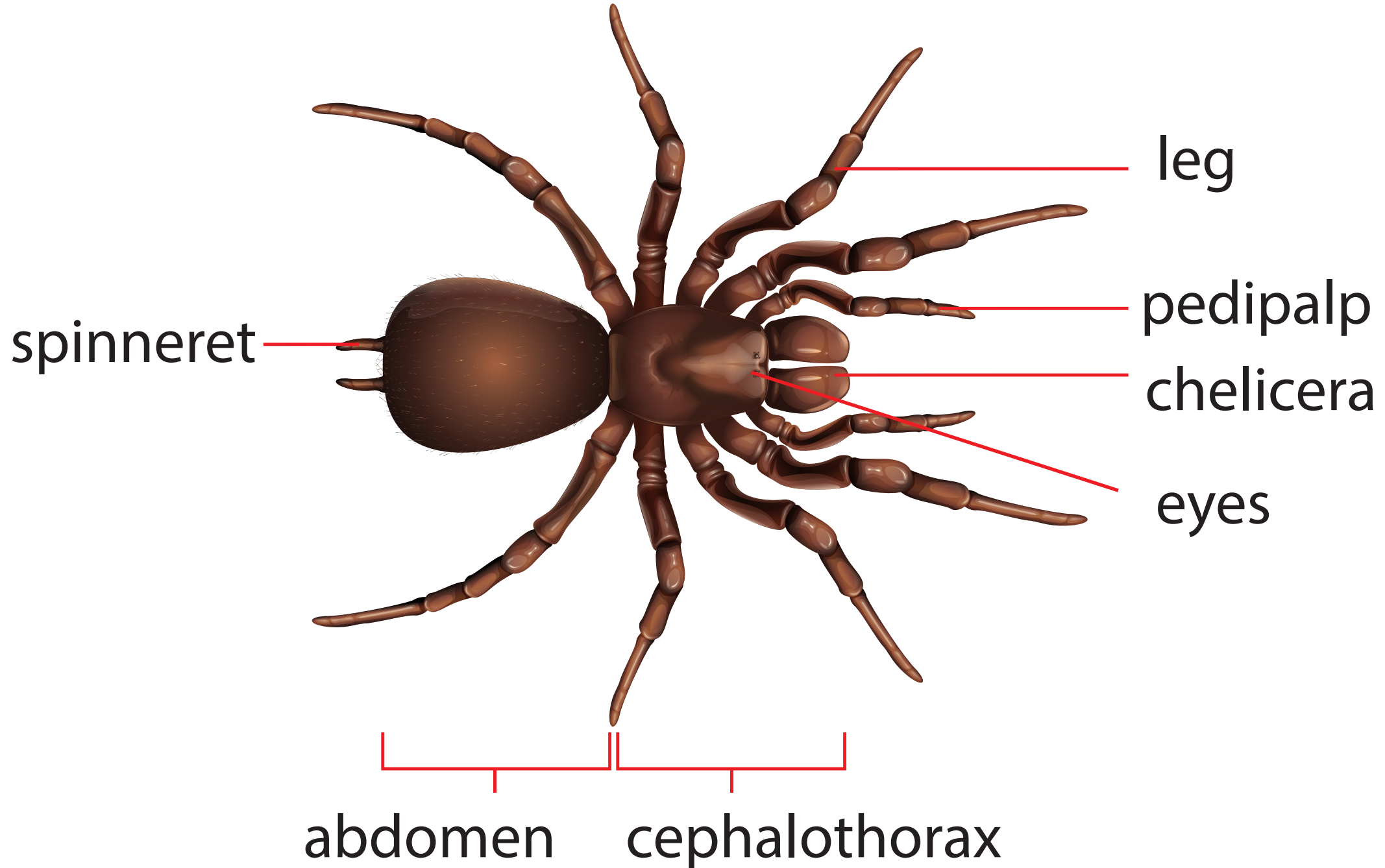
Spider Anatomy

Discussion Questions:



- 1) What are the main body parts of a spider?
- 2) What are their special features?

Spider Body Parts

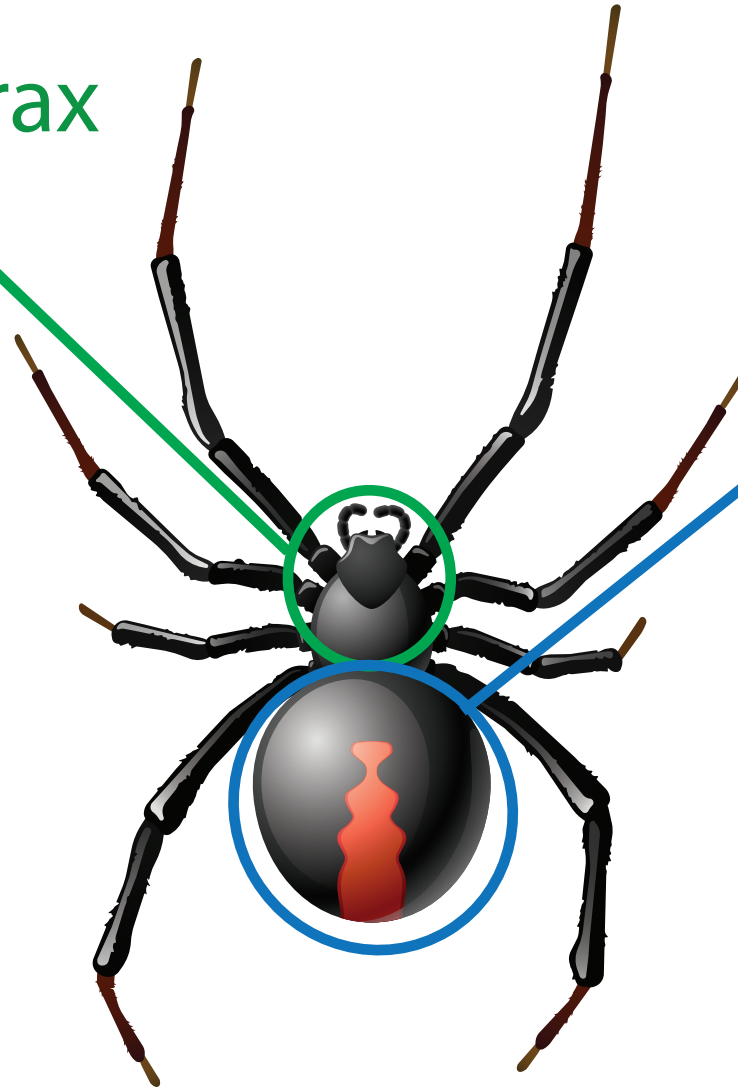


There are two sections to a spider's body:

The cephalothorax

The cephalothorax contains these organs:

- stomach
- brain
- venom glands



The abdomen

The abdomen contains these organs:

- heart
- lung
- intestines
- reproductive organs
- silk glands

What body parts can be seen on the cephalothorax?



Chelicerae

The chelicerae are the mouth parts or jaws of the spider. The fangs are located at their tips and these connect to the venom glands inside the body. The spider uses the muscular jaws of the chelicerae to latch onto prey, or something they see as a threat.

Eyes

The spider's eyes are located at the front of the cephalothorax. Most spiders have eight eyes. Some species have six or fewer eyes.

Spiders generally do not have good eyesight. Most can only distinguish between light and dark. They rely on vibrations and taste to help them navigate and catch their prey.

Legs

The spiders legs are attached to the underside of the cephalothorax. spiders have eight legs. Each leg has seven segments. Spiders don't get stuck in their webs as they only make contact with the claws and hairs at the very tips of their legs.

