

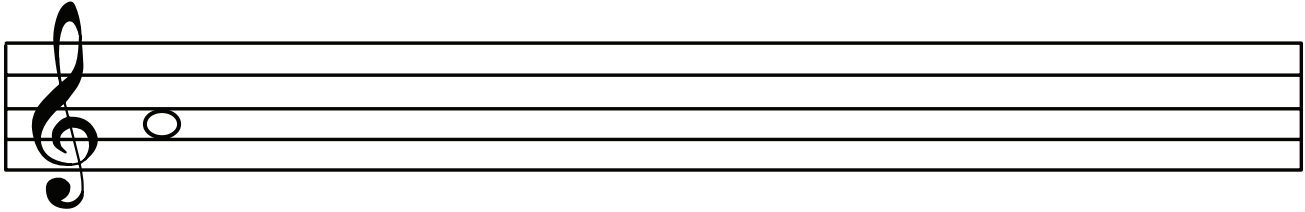
Name: \_\_\_\_\_ Date: \_\_\_\_\_

## Whole Notes

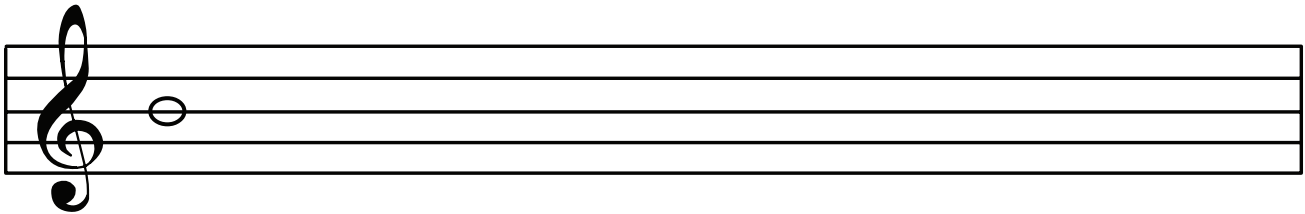
○ This is a whole note. Whole notes equal \_\_\_\_\_ beats.

Draw ten whole notes \_\_\_\_\_

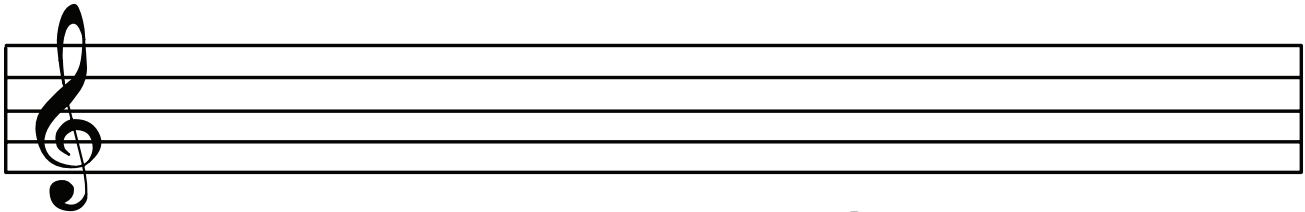
Draw ten more whole notes in spaces on the staff.



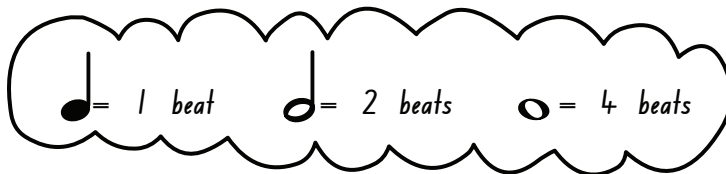
Draw ten more whole notes on the lines of the staff.



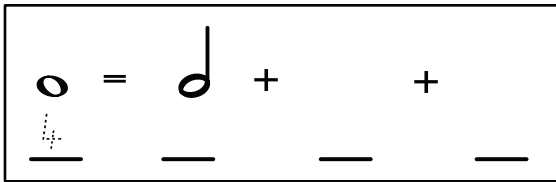
Draw some whole notes, quarter notes and eighth notes on the staff



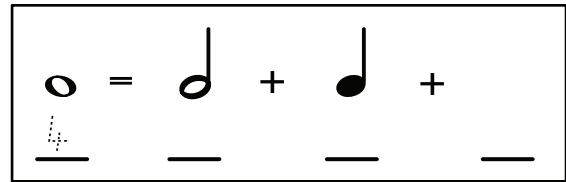
## Note Values



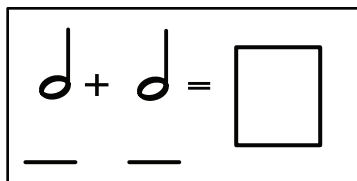
Draw notes that will add to an equal value



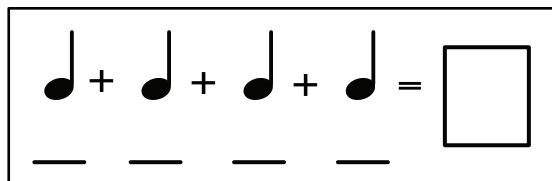
Draw notes that will add to an equal value



Add the total value



Add the total value



○ = \_\_\_\_\_ quarter notes

○ = \_\_\_\_\_ half notes