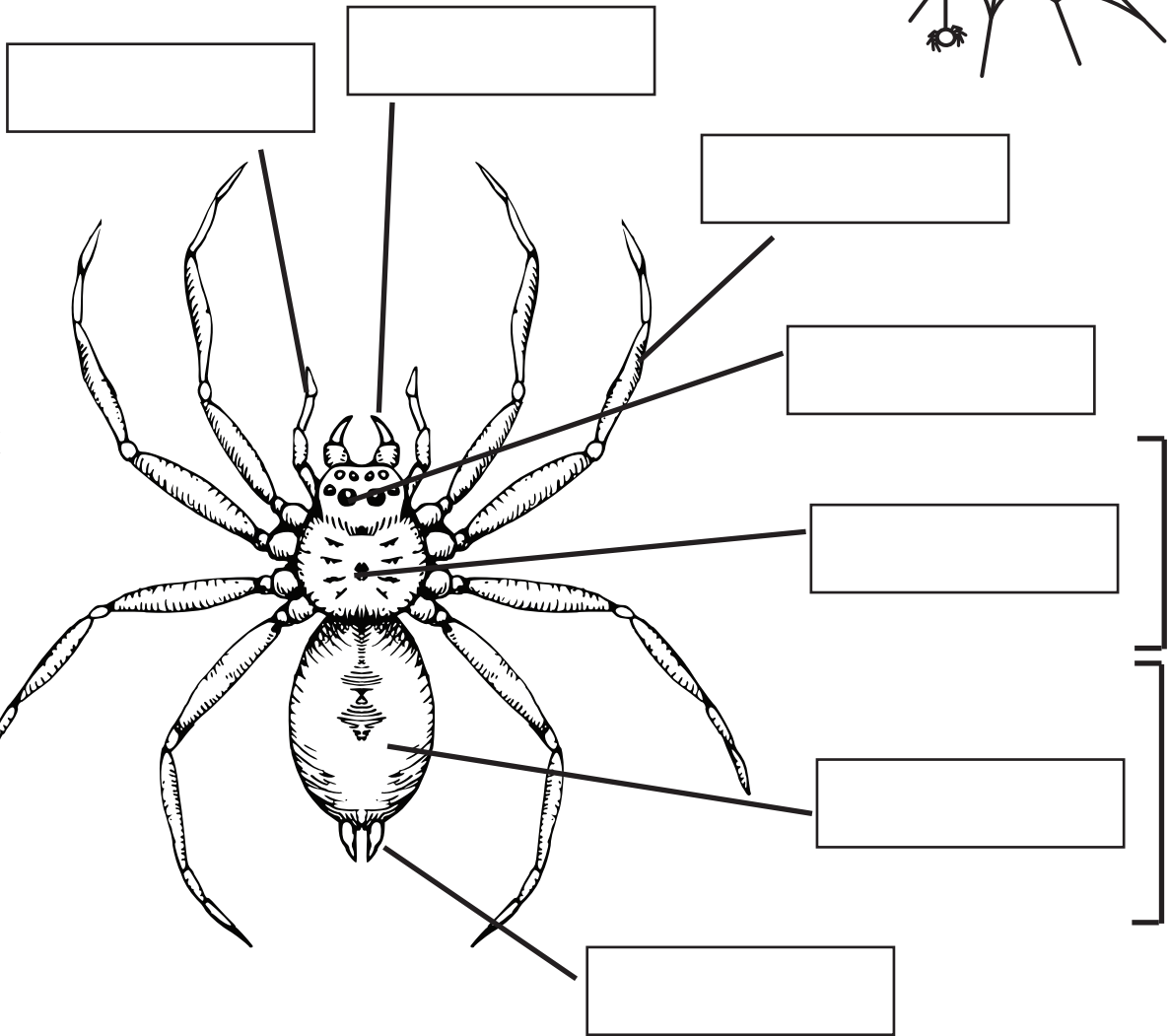
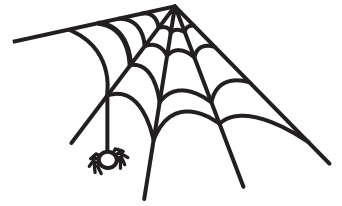
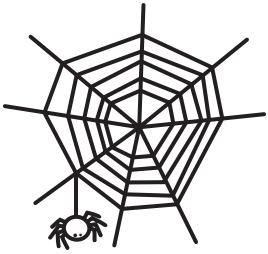


# Spider Anatomy

Name each body part of the spider then fill in the missing words.



Key Words

- abdomen
- brain
- cephalothorax
- eyes
- fangs
- heart
- intestines
- legs
- lungs
- mouth
- pedipalps
- stomach
- spinnerets

There are two sections to a spider's body:  
 1) the cephalothorax 2) the abdomen.

The spider's e\_\_\_\_, m\_\_\_\_, f\_\_\_\_ and p\_\_\_\_\_ are located on the cephalothorax. The spider's l\_\_\_\_ also join on to this section. The cephalothorax contains the spider's b\_\_\_\_ and s\_\_\_\_\_.

The spider's s\_\_\_\_\_ are located on the abdomen.

The spider's h\_\_\_\_, l\_\_\_\_, and i\_\_\_\_\_ are also located in the abdomen.